



# Community Resources Guide



9 N. Centre St., Ste 301  
Pottsville, PA 17901

**Phone:** (570) 622-6421 \* **Fax:** (570) 622-7424

**Email:** [maloneexdir@schuylkillunitedway.org](mailto:maloneexdir@schuylkillunitedway.org)

**Website:** [www.SchuylkillUnitedWay.org](http://www.SchuylkillUnitedWay.org)

# Introduction

## *Unpredictable....*

This is the word that can be used to describe the road of life at times. Sometimes life doesn't turn out quite as we have planned or want. However, you are not alone.

Everyone at one time or another finds themselves in need. This **“Community Resources Guide”** is compiled to help at those times. It is for the young mother who wants to go back to school, but doesn't know how to afford day care. It is for the family who has been displaced by a fire and needs the help to start again. It is for the father who has worked at the same company for 10 years and has suddenly found himself laid off.

These are just some examples of the life challenges that none of us are immune to. But there is good news....you have not lost your greatest resource: YOU! You have more strength than you realize. With the support of the agencies and groups found in these pages, you will get back on your feet.

Please take advantage of the community services that are available to you right here in Schuylkill County. If you or your family members have questions about community services or require further information, please call the Schuylkill United Way at (570) 622-6421 or visit us at [www.schuylkillunitedway.org](http://www.schuylkillunitedway.org).





# Fast Facts about the Schuylkill United Way



\***99%** of every dollar raised in Schuylkill County stays right here in Schuylkill County.

\*For over 85 years, the Schuylkill United Way has returned **\$36 million to the community** through support to our partner agencies that provide programs and services at little or no cost.

\*Administrative costs for the Schuylkill United Way are 19%, well below the state average of 25%.

\*The Schuylkill United Way is an independent non-profit organization that is governed by a **volunteer 30 member Board of Directors**.

\*All incentive prizes for the campaign are **donated** by local community minded companies who support the Schuylkill United Way.

# Surviving Life's Challenges

## *How do I deal with my feelings?*

It is normal to have these feelings, concerns and fears:

- \* Panic
- \* Helplessness
- \* Guilt
- \* Depression
- \* Frustration
- \* Betrayal
- \* Denial
- \* Isolation



- \* Blame
- \* Stress
- \* Scared
- \* Anger
- \* Pressure
- \* Resentment
- \* Embarrassment
- \* No Control

Recognizing your feelings and dealing with them is the first priority on your road to employment, handling increasing medical bills, and rebuilding a lost home due to fire, etc. It is human nature to feel as if the rug has been pulled out from under you when these circumstances happen. Hiding your feelings and pretending you are not worried or scared only makes things worse for you and those close to you. Here are some ways that may be helpful in dealing with your anxieties:

- Relieve tension by staying physically active
- Volunteer
- Develop hobbies or other interests
- Share your feelings with people who love and support you
- Join or start a support group



# Unemployment: Where do I start?

There are many life challenges that are addressed in this guide, but one of the most prevalent that we as a society are facing is increased unemployment. When an individual's job is lost there are many emotions that can emerge. Our country is experiencing tremendous change that no one can control.

The first thing to remember is that you are not alone! It is important to understand that you are still a valued member of the community.

## Recommendations for Financial Obligations

1. Notify your mortgage holder that you are on a lay-off. If you are unable to meet mortgage payments, request a postponement or reduction of payments until you return to work.
2. If you rent, inform your landlord of your situation. Again, if you are unable to pay your rent, ask your landlord to postpone or lower your payments until you return to work.
3. All utilities (phone, gas, electric, and water) should be notified that you are on a layoff. In most cases, payment arrangements can be made if you explain your situation.
4. If you have any accounts with department stores or other creditors (loans, credit cards, medical bills, etc.) you should notify them immediately. Creditors may ask you to pay a small payment each week, month, etc. If this is the case, you are strongly urged to comply with their request. One of the worst things you can do is not live up to the agreements set forth.
5. If you are paying child support or alimony make sure you contact the judge, domestic relations office, or court that issued the degree and inform them about the situation.

The Schuylkill United Way's newest program, the **Nurse's Pantry**, is in every elementary, middle, and high school in the county.

The **Nurse's Pantry** provides basic hygiene items, healthy snacks, and school approved attire to children in need. We are very happy to be able to help students be better equipped to succeed in school!



Schuylkill County residents can save up to 80% on the cost of their prescriptions. For more information, please visit [www.singlecare.com](http://www.singlecare.com).



Helping Harvest operates **Mobile Markets** in Schuylkill County that provide produce, dairy, meat, and other food to those who are income eligible. As of September 2022, you can find Mobile Markets in the following towns:

Auburn	Pottsville
Girardville	Shenandoah
Mahanoy City	Tamaqua
Minersville	Valley View
Orwigsburg	

Mobile Market sites provide food once a month, year round. To find specific locations of the Mobile Market near you, call Helping Harvest at (610) 926-5802 between 8:00am and 4:30pm Monday -Friday. You can also visit their website: [www.helpingharvest.org](http://www.helpingharvest.org).

### **Other services provided by Helping Harvest:**

#### **SNAP Application Assistance**

610-926-5802 x206

[snap@helpingharvest.org](mailto:snap@helpingharvest.org)

Please call or e-mail about assistance with applying for SNAP benefits. Our bilingual staff member can discuss eligibility, complete an application and follow-up throughout the process.

#### **Food Referrals**

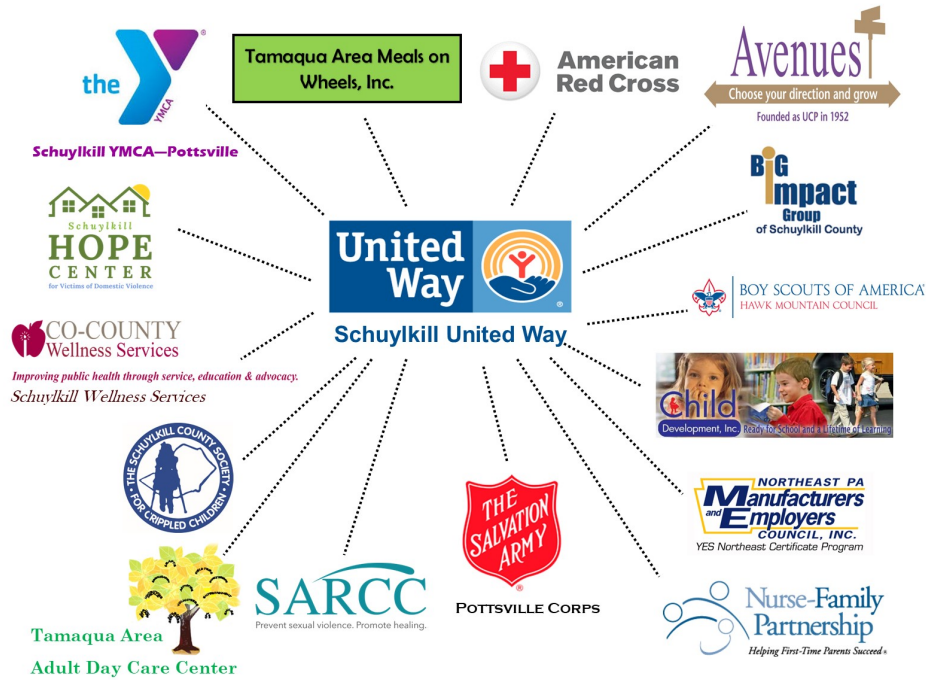
Helping Harvest

610-926-5802 x206

Please call to learn more about locations that offer food assistance in the area that you live in. Helping Harvest staff will work to identify locations based on your needs.



## Partner Agencies of Schuylkill United Way



SUW's partner agency, Avenues, operates two thrift stores that not only offer great deals on clothing and household items, but also employ our neighbors with special needs. Visit their stores for a great bargain and to support wonderful businesses!



**Valley Treasures Thrift Shop**  
 938 W. Locust Street  
 Valley View, PA 17983  
 (570) 682-2522

**Expressions**  
 114 N. Main Street  
 Shenandoah, PA 17976  
 (570) 462-6252

Learn more: [www.avenuesofpa.org/retailprograms.html](http://www.avenuesofpa.org/retailprograms.html)



## Partner Agencies

<b>American Red Cross, Schuylkill County</b> <i>www.redcross.org</i> <i>peter.brown@redcross.org</i>	610-375-4383
<b>Avenues, Founded as UCP in 1952</b> <i>www.avenuesofpa.org</i> <i>pkeitsock@avenuesofpa.org</i>	570-622-7920
<b>Big Impact Group of Schuylkill County</b> <i>www.bigsschuylkillcounty.org</i> <i>bigs.doug@aol.com</i>	570-622-0174
<b>Boy Scouts of America/Hawk Mountain Council</b> <i>www.hmc-bsa.org/</i> <i>Jim.milham@scouting.org</i>	610-926-3406
<b>Child Development Inc.</b> <i>www.childdevelop.org</i> <i>mdevlin@childdevelop.org</i>	570-544-8959
<b>Northeast Pa Manufacturer's &amp; Employers Council, Inc</b> <b>YES Northeast Certificate Program</b> <i>www.nepamaec.com</i> <i>cfasnacht@nepamaec.com</i>	570-622-0940
<b>Nurse-Family Partnership</b> <i>www.nursefamilypartnership.org</i> <i>jmarcalus@cpppa.org</i>	570-628-2611
<b>Salvation Army/Pottsville Corps</b> <i>www.easternusa.salvationarmy.org</i> <i>bettyellen.barrett@use.salvationarmy.org</i> <i>derek.barrett@use.salvationarmy.org</i>	570-622-5252
<b>Schuylkill Co. Society for Crippled Children</b> <i>skimmel@scscc.comcastbiz.net</i>	570-622-7170
<b>Schuylkill Hope Center for Victims of Domestic Violence</b> <i>www.schopecenter.org</i> <i>support@schopecenter.org</i>	570-622-3991
<b>Schuylkill Wellness Services</b> <i>www.ocoountywellnessservices.org</i> <i>ccws1@ocoounty.org</i>	570-622-3980
<b>Schuylkill YMCA</b> <i>www.schuylkillymca.com</i> <i>akarenda.schuylkillymca@gmail.com</i>	570-622-7850
<b>Sexual Assault Resource &amp; Counseling Center of Sch. Co.</b> <i>www.sarccheals.org</i> <i>aperrotto@sarccschuylkill.org</i>	570-628-2965
<b>Tamaqua Area Adult Daycare</b> <i>taadcc@verizon.net</i>	570-668-6556
<b>Tamaqua Area Meals on Wheels, Inc.</b> <i>tamaquamow@verizon.net</i>	570-449-8271

# Assistance

## Pregnancy Counseling/Maternity & Child Support

Birthright (Frackville)	570-874-2621
Catholic Charities	570-628-0466
Child Care Information Services of Schuylkill County	1-800-216-1938 or 570-624-7950
Children & Youth Services of Schuylkill County	1-800-722-8341 or 570-728-2169
Jewel Women's Center	570-624-7244
Lifelong Learning Center (a program of Schuylkill IU #29)	570-628-5761
Maternal & Family Health Svcs. (WIC)	570-622-1244
Nurse-Family Partnership	570-628-2611
Pregnancy Care Center	570-648-2600
Healthy Baby Helpline	1-800-986-2229

## Senior Services

AARP	1-888-687-2277
Apprise Health Insurance Counseling	1-800-621-6325
Diakon Community Services for Seniors	570-624-3020
Eldercare Locator	800-677-1116
Office of Protective Services (Ombudsmen)	570-628-3931
PACE	1-800-225-7223
Retired Senior Volunteer Program (RSVP)	570-622-3103
Schuylkill County Meals on Wheels	570-624-3015
Schuylkill Co. Senior Services (Area on Aging)	570-622-3103
Schuylkill Elder Abuse Prevention	1-800-832-3313 or 570-622-3103
Social Security Administration	1-866-269-0880
Solutions for Better Aging	1-888-405-4242
Tamaqua Area Meals on Wheels	570-668-6954

# Assistance

## Employment/Unemployment Services

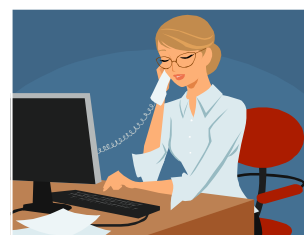
Avenues, Founded as UCP in 1952	570-622-7920
Advanced Medical Staffing	570-628-2800
AHEDD	570-622-9711
Career Link	570-622-5253
Civil Service Commission	717-787-7811
Goodwill Keystone Area ( <i>Employment Only</i> )	570-385-6892
Manpower	570-622-9704
Office of Vocational Rehabilitation	610-621-5800
One Source Staffing	570-622-2626
ReDCo Group Workforce Investment Network	570-622-5241
Service Access & Management, Inc.	570-621-2700
Unemployment Compensation	1-888-313-7284

## Clothing

Community Mission	570-617-4620
God's Helping Hands Outlet	570-386-5893
Open Arms Ministry	570-429-1782
Servants to All "My Father's House"	570-728-2917 or 570-900-1161
Salvation Army Pottsville	570-622-5252
Schuylkill Community Action	570-622-1995

## Transportation

Schuylkill Transportation System (STS)	1-800-832-3322
--	----------------



# Assistance

## Health Services/Medical

American Cancer Society	1-800-227-2345
American Diabetes Association	1-800-342-2383 <i>or</i> 717-657-4310
American Heart Association	1-800-242-8721
American Lung Association	1-800-586-4872
Cystic Fibrosis Foundation	1-800-344-4823
Department of Health	1-877-724-3258
Maternal & Family Health Services (WIC) Cancer Screening	1-800-367-6347 <i>or</i> 570-622-1244
Medicare	1-800-633-4227
PA Elks Home Service Nurse	570-622-7920 ext. 114
Partnership for Prescription Assistance	1-888-477-2669
Primary Health Network	570-544-9123
Schuylkill Alliance for Health Care Access	570-628-5515
Schuylkill County Assistance Office	570-621-3000
Schuylkill Wellness Services	570-622-3980

## Hospitals

Blue Mountain Health System/Lehighton	610-377-1300
Geisinger Medical Center, Danville	570-271-6211
Geisinger St. Luke's Hospital, Orwigsburg	866-785-8537
Geisinger Shamokin Community Hospital	570-644-4200
Lehigh Valley Hospital—Cedar Crest	610-402-8000
Lehigh Valley Health Network Schuylkill - South Jackson Street	570-621-5000
Lehigh Valley Health Network Schuylkill - East Norwegian Street	570-621-4000
Penn State Hershey Medical Center	1-800-243-1455
Penn State Health St. Joseph Medical Center	610-378-2000
Reading Hospital Tower Health	1-866-988-4377 <i>or</i> 484-628-8000
St. Luke's Hospital Miners Campus/Coaldale	570-645-2131

# Assistance

## **Housing/Rental**

### **EMERGENCY HOUSING**

Schuylkill Community Action	570-622-1995
Schuylkill County Assistance Office	1-877-306-5439
Catholic Charities	570-628-0466
Servants to All/My Father's House	570-900-1161 or 570-728-2917

### **HOUSING SERVICES**

Pottsville Housing Authority	570-628-2702
Schuylkill Housing Authority	570-385-3400

### **EMERGENCY / TEMPORARY SHELTER**

American Red Cross, Schuylkill County (Fire & Disaster Aid)

*Main Phone #: 610-375-4383*

*Schuylkill County Residents Dial: 570-622-9550*

Children & Youth Services (households with children needing emergency shelter) 1-800-722-8341  
or 570-628-1050

Coordinated Entry Access Site (Servants to All) Dial 211 for access to services

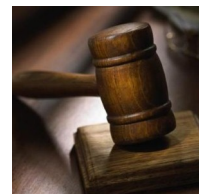
Salvation Army, Pottsville Corps	570-622-5252
Salvations Army, Tamaqua Service Center	570-668-0410
Schuylkill Community Action	570-622-1995
Schuylkill County Assistance Office (emergency shelter allowance)	570-621-3000
Schuylkill Haven Council of Churches (Sch.Haven Area & 1 night only)	570-385-2049
Service Access & Management (SAM) (individuals with mental health needs)	570-621-2700
Servants to All /My Father's House	570-900-1161 or 570-728-2917
Veterans Homeless Hotline	1-877-424-3838

## **Legal Help**

MidPenn Legal Services 570-628-3931

## **Tax Help**

Diakon 570-624-3018



# Assistance

## Emergency Food/ Food Programs

Avenues (Food Pantry)	570-622-7920
Board of Assistance of Schuylkill Co. (Food Stamps)	570-621-3000
Catholic Charities	570-628-0466
Community Mission in Minersville	570-617-4620
Diakon Community Services	570-624-3010
Holy Family Community Outreach (Minersville only)	570-544-4741
Mahanoy City-St. Vincent DePaul Society (Mahanoy area only)	570-617-0751
National Hunger Hotline	1-866-348-6479
Open Arms Ministry (St. Clair)	570-429-1782
Orwigsburg Food Pantry	570-366-3867 option 3
Pine Grove Council of Churches (Pine Grove only)	570-345-8216
Pottsville Area Soup Kitchen	570-628-5119
St. Matthew's Parish (Minersville only)	570-544-2739
Salvation Army, Pottsville Corps	570-622-5252
Salvation Army, Tamaqua Service Center	570-668-0410
Schuylkill Community Action - (Call for a list of local food pantries)	570-622-1995
Schuylkill County Area Aging Office	570-622-3103
Schuylkill County Assistance Office	570-621-3000 or 1-877-306-5439
Schuylkill Haven Council of Churches (Sch. Haven area only)	570-205-1763
Servants to All "My Father's House"	570-728-2917 or 570-900-1161
Tamaqua Area Meals on Wheels	570-668-6954
Trinity Church of Christ (Tamaqua area residents only)	570-391-6719
Maternal & Family Health Svcs. (WIC)	570-622-1244

## Free Meals

God's Chuckwagon Mobile Soup Kitchen	570-259-3468
St. Pat's Pottsville Area Kitchen	570-617-2957
Salvation Army/Pottsville Corps	570-622-5252

## Emergency Fuel

Catholic Charities	570-628-0466
Schuylkill County Assistance Office	570-621-3000
Schuylkill Community Action	570-622-1995



# Assistance

## **Crisis Intervention/Counselors/Mental Health**

Access Services	570-366-5096
Advocacy Alliance	1-877-315-6855
Alcoholics Anonymous	570-628-4550
Child Abuse	1-800-932-0313
Clinical Outcomes Group, Inc.	570-628-6990
Crisis Intervention Services	877-993-4357 or 988
Culture 2 Culture	570-581-8377
Narcotics Anonymous	1-800-407-7195
National Suicide Prevention Lifeline	1-800-273-8255
Office of Drug & Alcohol	570-621-2890
Open Arms Ministry	570-429-1782
Pennsylvania Coalition Against Rape	1-888-772-7227
Pa. Treatment & Healing (Drug & Alcohol Program)	570-516-9377
Poison Control	1-800-222-1222
Northwestern Human Services	570-628-3323
ReDCo Group Behavior Services	570-628-5234
Sexual Assault Resource & Counseling Center (SARCC)	570-628-2965
Schuylkill County Crisis Hotline	1-877-993-4357
Schuylkill County Drug & Alcohol	570-621-2890
Safe Haven Crisis Facility	570-628-0152
Schuylkill Medical Center-Pathways Counseling Services	570-621-5910
Sch. Hope Center for Victims of Domestic Violence	1-800-282-0634 or 570-622-3991
Service Access & Management, Inc.	570-621-2700
Suicide Prevention Task Force	877-993-4357

## **Utilities**

On-Track/Operation Help (Schuylkill Community Action)	570-622-1995
PPL Utilities	1-800-342-5775
Public Utility Commission	1-800-692-7380
Salvation Army, Pottsville Corps	570-622-5252
Salvation Army, Tamaqua Service Center	570-668-0410
Schuylkill County Assistance Office	570-621-3072
UGI	1-800-276-2722



# Assistance

## Home Health/Hospice Care/Nursing Homes

Affilia Home Health	570-628-4455
Broad Mountain Nursing & Rehabilitation Center	570-874-0696
Comfort Keepers	570-858-0392
Covenant Home Care	1-800-726-8761
Golden Living Center	570-622-3982
Hometown Nursing Home	570-668-1775
Hospice of Central Pa (www.hospiceofcentralpa.org)	570-628-2290
Lehigh Valley Home Care Schuylkill	570-621-5050
Ombudsman (Nursing Home Complaints/Issues)	570-628-3931
Rosewood Rehab & Nursing Center	570-385-0331
Schuylkill Home Care	570-385-2818
Senior Centers:	
Mahanoy City	570-773-0738
Minersville	570-544-5121
Pottsville	570-628-3513
Schuylkill Haven	570-385-5611
Shenandoah	570-462-3155
Tremont	570-695-3500
Seton Manor	570-366-0400
Shenandoah Manor Nursing Center	570-462-1908
St. Luke's Miners Memorial	570-645-2131
Tremont Nursing Center	570-695-3141
Volunteer Home Care	570-621-7254

## Veterans Services

Lebanon VA Medical Center	1-800-409-8771 or 717-272-6621
Opportunity House (www.opphouse.org)	(570) 604-6948 or (610) 374-4696 Ext 293
Schuylkill County VA Clinic	570-581-8244
Schuylkill Co. Veterans' Affairs	570-628-1400
Scranton Veteran Center	570-344-2676
Supportive Services for Veterans & Families (SSVF)	570-604-6948
Veteran's Homeless Hotline	1-877-424-3838
Veteran's Outreach Social Worker	717-272-6621 Ext. 4732 or 570-933-1140
Veteran's Suicide/Crisis Hotline	1-800-273-8255
Wilkes-Barre VA Medical Center	570-824-3521

# Assistance

## **Libraries**

Ashland Public Library	570-875-3175
Frackville Free Public Library	570-874-3382
Mahanoy City Public Library	570-773-1610
Minersville Public Library	570-544-5196
Orwigsburg Free Public Library	570-366-1638
Port Carbon Public Library	570-622-6115
Pottsville Free Public Library	570-622-8880
Ringtown Area Library	570-889-5503
Schuylkill Haven Free Library	570-385-0542
Shenandoah Library	570-462-9829
Tamaqua Public Library	570-668-4660
Tremont Area Public Library	570-695-3325
Tri-Valley	570-682-8922

## **Lifelong Learning Centers**

Alvernia University Schuylkill Center	570-385-2382
Empire Beauty School	570-622-6060
Lehigh Carbon Community College, Tamaqua	570-668-6880
Lifelong Learning Center	570-628-5761
Penn State Schuylkill Campus	570-385-6000
Schuylkill Technology Center South Campus	570-544-4748
Schuylkill Technology Center North Campus	570-874-1034
St. Joseph Center for Special Learning	570-622-4638

# Assistance

## Abuse/Victims Services

National Child Abuse Hotline	1-800-422-4453
National Center for Missing & Exploited Children	1-800-843-5678
National Center for Victims of Crime, Abuse & Domestic Violence, Rape	1-800-394-2255
National Child Abuse and Neglect	1-800-422-4453
National Domestic Violence Hotline	1-800-799-7233
Sch Hope Center for Victims of Domestic Violence	1-800-282-0634
Sexual Assault Resource and Counseling Center (SARCC)	570-628-2965

## Children/Youth Services/Support

Avenues, Founded as UCP in 1952	570-622-7920
Big Impact Group of Schuylkill Co.	570-622-0174
Child Care Information Services of Schuylkill County	570-624-7950
Child Development, Inc.—Head Start of Schuylkill County	570-544-8959
Foster Care Supports—Bridge 127	570-573-3613
Girl Scouts in the Heart of PA	1-800-692-7816
Healthy Kids Helpline	1-800-986-5437
Keystone Job Corps Center	570-708-0692
Maternal & Family Health Svcs. (WIC)	570-622-1244
National Hotline for Missing & Exploited Children	1-800-843-5678
SAM,Inc Early Intervention Services	1-877-216-5035 or 570-621-2700
Schuylkill Co. Children & Youth	570-628-1050
Schuylkill Intermediate Unit 29	570-544-9131
Schuylkill YMCA	570-622-7850
Valley Youth House (shelter of at-risk youth, sites located outside of Schuylkill County)	570-866-5556



PENNSYLVANIA **2-1-1** East Powered by United Way

**United Way**

**FIND HELP!**

**Call 2-1-1**

Schuylkill County's  
Community Help Line

24 HOURS A DAY  
7 DAYS A WEEK  
365 DAYS A YEAR

2-1-1 Provides Free Information & Referral Services to Community Resources

Family Food Health Care

Housing/Utilities Mental Health Substance Abuse

PHONE: 2-1-1 or (855) 567-5341  
TEXT: Text your ZIP CODE to 898211  
WEB: [www.pa211east.org/schuylkill](http://www.pa211east.org/schuylkill)

PENNSYLVANIA **2-1-1** East Powered by United Way

**United Way**

**DO YOU KNOW THE DIFFERENCE?**

**2-1-1 COMMUNITY HELP LINE**

- ★ Free, confidential information and referral service
- ★ Available 24 hours a day, 7 days a week
- ★ Connects you to a broad range of services including aging services, counseling, food pantries, health services, housing, support groups and more
- ★ Search our online database at PA211East.org

3-1-1 Local Government Services (Not Available in all Areas)  
4-1-1 Directory Assistance  
5-1-1 Traffic Information  
6-1-1 Telephone Company  
7-1-1 TTY/Relay (Deaf and Hard of Hearing)  
8-1-1 Call Before You Dig  
9-1-1 Police, Fire, Ambulance

**HELPING OTHER PEOPLE EVERYDAY**

[www.SchuylkillUnitedWay.org](http://www.SchuylkillUnitedWay.org)



Revised 3/23